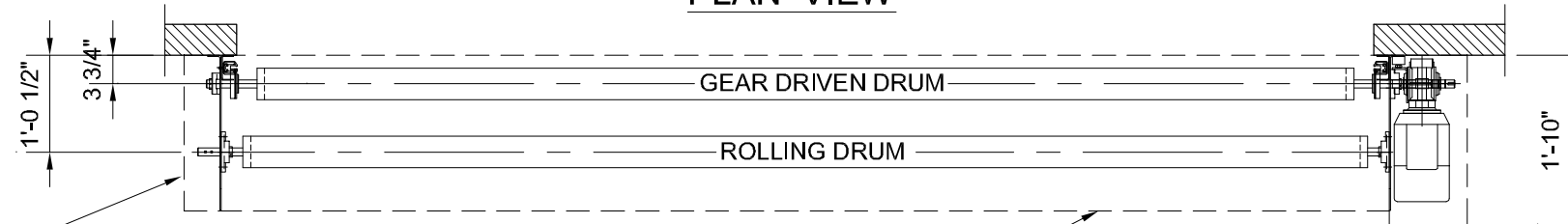


**PLAN VIEW**



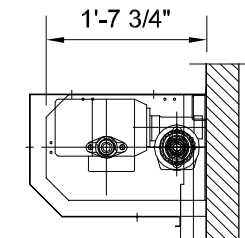
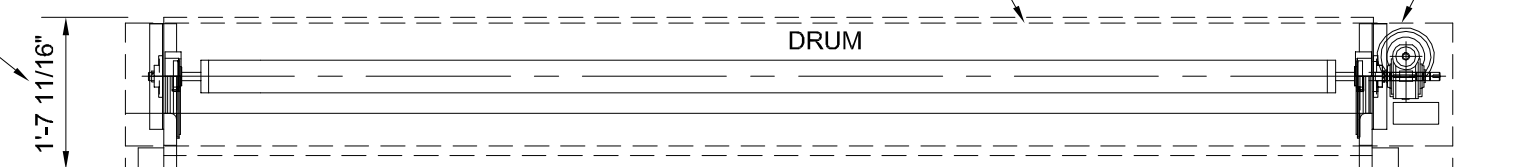
BELT COVER INCLUDED WITH MOTOR COVER.

DOORS OVER 16' IN HEIGHT REQUIRE A LARGER DRUM COVER AND 22" OF HEAD ROOM AND HAS 25" PROJECTION FROM WALL.

DRUM COVER, OPTIONAL

MOTOR COVER, OPTIONAL

REDUCED LINTEL OPTIONAL



DOOR CURTAIN IN REINFORCED PVC

PANEL COLOR:

SIDE GUIDE

COUNTER WEIGHT COVER

COUNTER WEIGHT

OPENING HEIGHT

4'-0"

5'-3"

ELECTRIC PHOTO-EYE

ELECTRIC PHOTO-EYE

LOOP SEAL WITH WIRELESS REVERSING EDGE

OPENING WIDTH

5 1/2"

DOOR POST (U PROFILE)  
3 1/8" X 1 9/16" X 1/8"

**ELEVATION VIEW - LEFT**

**ELEVATION VIEW - FRONT**

**ELEVATION VIEW - RIGHT**

**DOOR TYPE.: M2 STAINLESS STEEL - RIGHT HAND MOTOR**

DOOR NO.:	LOCATION:	OPENING SIZE (W X H):	MIN. HEADROOM REQUIRED:

**DYNACO**  
HIGH PERFORMANCE DOORS  
TEL. (800) 459 1930 FAX. (800) 459 1960

**PROJECT TITLE**

ADDRESS (CITY, STATE)

QUOTE NUMBER: XXXXXXXXXXXX

DEALER: XXXXXXXXXXXX

REGIONAL MANAGER:

XXXXXXXXXXXX

CONTACT NUMBER:

(XXX) XXX-XXXX

DATE:

01/08/2009

SCALE:

1/2" = 1'-0"

FILE NO.:

M2-SS-RH

SHEET NO.

**1** OF **1**